

Pre-assembled cable with M12 x 1 mating connector Model EZE53

WIKA-data sheet AC 50.08

Applications

- Machine building and plant construction, manufacturing automation
- Crane systems, hoists and offshore
- Mobile working machines
- Industrial weighing technology
- General industrial applications

Special features

- Reliable electrical connection
- Pre-assembled
- Shielded for high electromagnetic immunity
- Ready for immediate use
- Optional: with knurled nut made from stainless steel



Pre-assembled cable, model EZE53

Description

The model EZE53 pre-assembled cable is specially suited for the electrical connection of all transmitters.

The pre-assembled cable is available in a variety of variants. With straight or angled mating connectors in 4-pin or 5-pin design on the sensor side. The output side of the cable is cut to length. On request, the model EZE53 is available with a straight or angled M12 x 1 connector on the output side.

The shield of the pre-assembled cable ensures a high resistance against electromagnetic interference. When plugged in, the cable achieves IP67 ingress protection and is thus suitable for use in harsh environments.

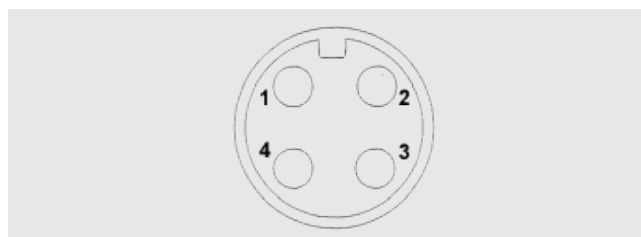
The pre-assembled cable can be ordered with knurled nut in stainless steel for permanent use in demanding outdoor application (e.g. maritime environment).

Specifications

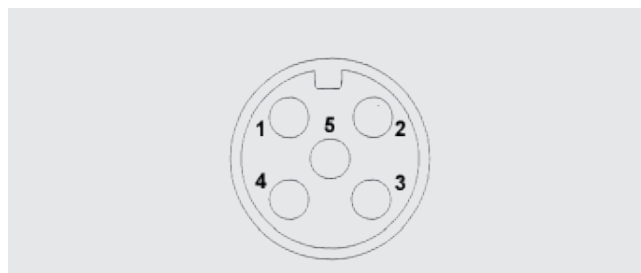
Model EZE53	Basic version	Stainless steel version
Connection type		
Sensor side	Straight or angled M12 x 1 mating connector, A-coding	
Output side	Cut to length	Cut to length
Number of pins	4, 5	4
Shield	Yes	
Contact resistance	≤ 10 mΩ	≤ 5 mΩ
Insulation resistance	≥ 10 ⁹ Ω	≥ 10 ⁹ Ω
Current-carrying capacity	≤ 4 A	
Nominal voltage	DC 60 V / AC 50 V	
Wire colours	1: Brown / 2: White / 3: Blue / 4: Black / 5: Grey	
Material		
Cable sheath	PUR	
Knurled nut	CuZn, nickel-plated	Stainless steel
Temperature range		
Fixed in place	-40 ... +80 °C	-40 ... +90 °C
Moveable	-25 ... +80 °C	-30 ... +90 °C
Bending radius		
Fixed in place	> 5 x cable diameter	
Moveable	> 10 x cable diameter	> 12 x cable diameter
Mating cycles	≤ 100	> 100
Cable length	2, 5, 10 m	5, 10, 15, 20 m Others on request
Cable diameter	4-pin: 5.50 mm 5-pin: 5.85 mm	5.10 mm
Wire cross-section	0.34 mm ²	

Pin assignment

Mating connector M12 x 1, 4-pin	
1	Brown
2	White
3	Blue
4	Black
Knurled nut	Shield

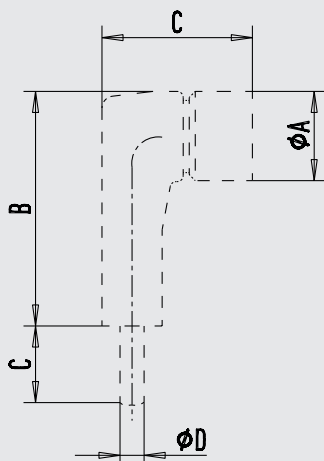


Mating connector M12 x 1, 5-pin	
1	Brown
2	White
3	Blue
4	Black
5	Grey
Knurled nut	Shield

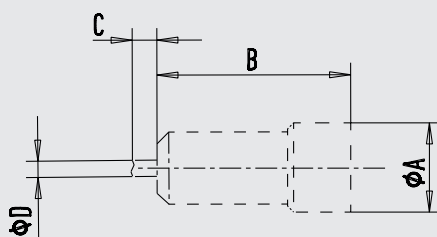


Dimensions in mm / [in]

Angled M12 x 1 mating connector



Straight M12 x 1 mating connector



Description	Dimensions in mm / [in]			
	A	B	C	D
Straight coupling - standard	14.5 [0.57]	43 [1.69]	-	See cable diameter
Angled coupling – standard	14.5 [0.57]	31 [1.22]	28.35 [1.12]	See cable diameter
Straight coupling – V4A	15 [0.59]	45.7 [1.79]	-	See cable diameter
Angled coupling – V4A	15 [0.59]	37.5 [1.47]	28.7 [1.13]	See cable diameter

Ordering information

Designation	Order number				
	With 2 m cable	With 5 m cable	With 10 m cable	With 15 m cable	With 20 m cable
4-pin mating connector M12 x 1 – basic version					
Straight	14259451	14259453	14259454	-	-
Angled	14259452	14293481	14259455	-	-
5-pin mating connector M12 x 1 – basic version					
Straight	14259458	79100672	14259472	-	-
Angled	79101493	79100686	11009969	-	-
4-pin mating connector M12 x 1 – stainless steel version					
Straight	-	79101522	79101523	79101524	79101525
Angled	-	79101520	79101521	79101518	79101519

© 07/2021 WIKA Alexander Wiegand SE & Co. KG, all rights reserved.
 The specifications given in this document represent the state of engineering at the time of publishing.
 We reserve the right to make modifications to the specifications and materials.

